

*- SEE NOTES

ITEM NO.	PART NUMBER	-XX*	DESCRIPTION	QTY.	NOTE
1	050-2059		LABEL, ID, BIKES, GENERIC	1	
2	050-2115-01		LABEL, MADE IN CHINA	1	
3	050-2199		LABEL, SECONDARY S/N, CARDIO	1	
4	050-2242		PACKAGING, CRATE, LOWER, STEPMILL	1	
5	050-2253		BADGE, PRODUCT, E-SM, AL, BRSHD	1	
6	110-1830		NUT, 3/8-16, NYLOK HEX	6	REF
7	110-1871		NUT, NYLON INSERT	4	
8	110-3169		SCREW, M6x65, SHC, HE, ISO4762	4	REF
9	110-3479		SCREW, 3/8-16, 1", BHCS, CS, ECB	4	REF
10	110-3480		NUT, 3/8-16, SHN, CS, ZP, GR 5	4	REF
11	110-3481		SCREW, 3/8-16, 3 5/8", BHCS, AS, ZP	2	REF
12	110-3482		SCREW, 5/16-18, 1 3/4", BHCS, AS, ZP	4	REF
13	110-3510		SCREW, 5/16-18, 3/4", BHCS, AS, ECB	4	REF
14	120-3257		WASHER, M6, TEETH, 0.6 THICK	4	REF
15	120-3330		WASHER, PLAIN, ID: .375", OD: .875", TH: .06", CS, ECB	4	REF
16	130-1788		WHEEL, OD: 6", BORE: 5", PP, NF	2	REF
17	140-3494		PIN, COTTER, Ø.12" WIRE, 1/2"-5/8" SHAFT, CS, ZP	2	REF
18	140-3495		FEET, 3/8-16 SCREW, 1.93" BASE	4	REF
(B) 19	220-0270		ADAPTER, CORD LINE, NEMA 5-15	1	
(B) 20	220-0272		ADAPTER, CORD LINE, CEE 7/7	1	
21	620-8174		MANUAL, OWNERS, E-SM	1	
(B) 22	711-3250-XX	-20	ASSY, BASE, E-STARMILL	1	
(B) 23	711-3287-XX	-13	ASSY, NECK, STARMILL	1	
(B) 24	711-3292-XX	-20	HANDRAIL, HEARTRATE, STARMILL	1	
25	711-3298		ADAPTER, FRAME, NECK, STARMILL	1	
(B) 26	711-3305-XX	-13	WELDMENT, RAIL, LOWER, LT, STARMILL	1	
(B) 27	711-3310-XX	-13	WELDMENT, RAIL, LOWER, RT, STARMILL	1	
28	711-3339		PIN, TRANSPORTATION, SM	2	REF
29	711-3340		GROMMET, HANDRAIL, LT, STARMILL	1	REF
30	711-3341		GROMMET, HANDRAIL, RT, STARMILL	1	REF
31	711-3342		GROMMET, NECK, STARMILL	1	REF
32	711-3346		KIT, HARDWARE, STARMILL	-	
33	711-3362		SHROUD, FRONT, UPPER, NECK	1	
(B) 34	712-4022		POWER SUPPLY, 90-260VAC/12VDC 5A MIN	1	
35	731-0367		WASHER, PLAIN, M10	12	
36	740-7842		WASHER, 8.4mmID X 21mm OD X 1.6mm THK	4	

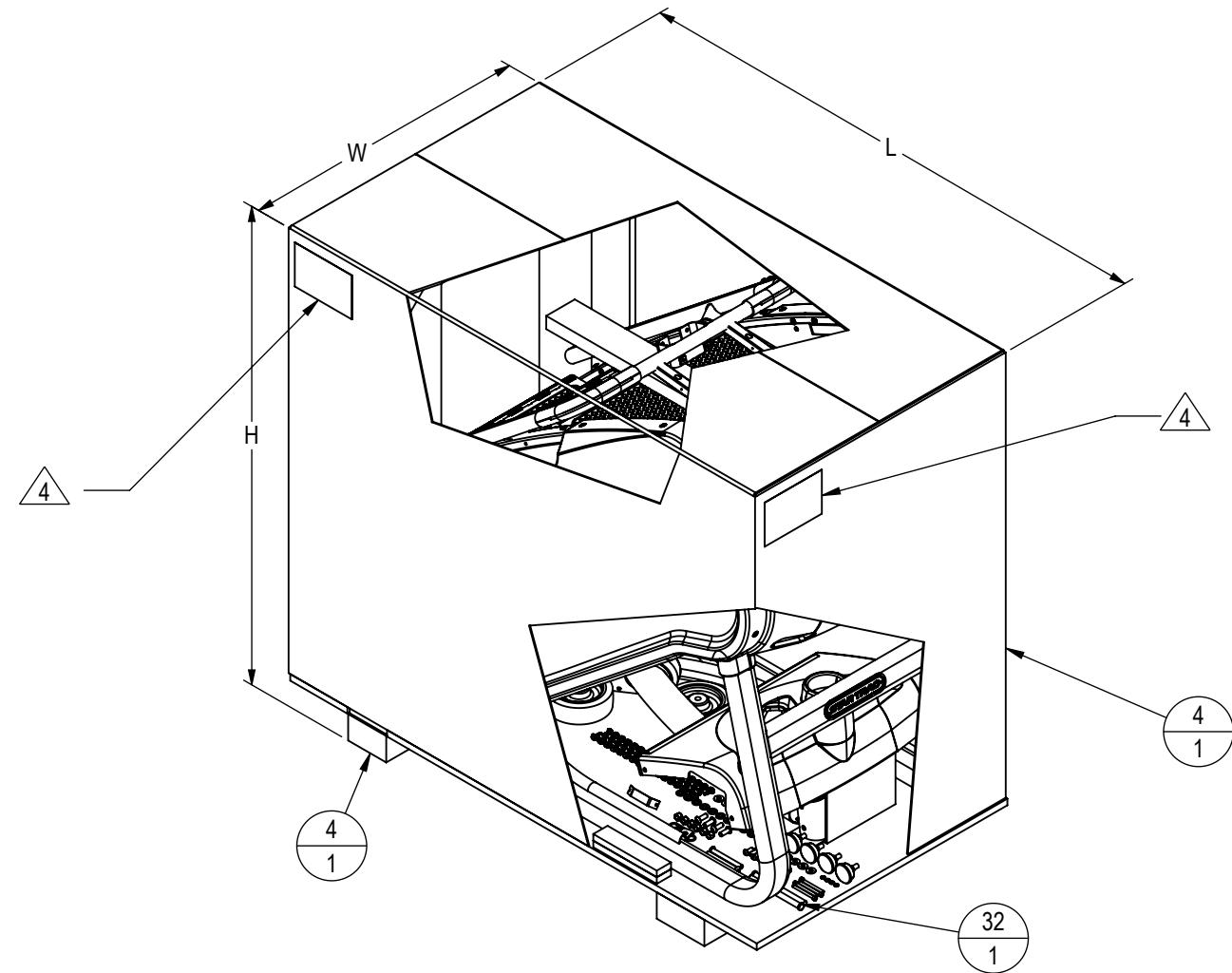
NOTES:

1. BOX SIZE
 - a. L = 147 cm
 - b. H = 122 cm
 - c. W = 79 cm
2. BOX UNIT GROSS WEIGHT: 398lb/181kg
3. E-SM NET WEIGHT: 354lb/ 161kg
4. LABEL INFORMATION (4 PLACES)
 - a. MODEL: E-SM
 - b. SKU: 9-5180-YRTBP0
 - c. SERIAL NUMBER: PER DOC 622-200-110
 - d. COUNTRY OF ORIGIN: MADE IN CHINA
- (B) 5. COLOR DESIGNATION PER-XX SPECIFIED IN SOP 620-8222, UNLESS OTHERWISE NOTED.

DOCUMENT STATUS:

NOTICE OF PROPRIETARY INFORMATION
THIS DOCUMENT SHALL NOT BE REPRODUCED NOR SHALL THE INFORMATION CONTAINED HEREIN BE USED BY OR DISCLOSED TO OTHER EXCEPT AS EXPRESSLY AUTHORIZED BY CORE HEALTH & FITNESS, LLC.

REVISION HISTORY				
REV	DATE	DESCRIPTION	ECO	BY
A	9/24/2012	PRODUCTION RELEASE	13859	SV
B	5/15/2014	REMOVED 711-3250; ADDED 220-0270, 220-0272, 711-3250-XX, 712-4022; ADDED -XX COLOR DESIGNATION (INCLUDING NOTE 5)	14437	SV



MATERIAL SEE BOM	THIRD ANGLE PROJECTION			CORE HEALTH & FITNESS, LLC 4400 NE 77th Ave., Suite 300 Vancouver, WA 98662		
	FINISH N/A	DRAWN SCN	DATE 9/8/2011	CORE PART NO 9-5180-MUNBP0	REV B	TITLE BASE, UNIV. E-STARMILL
VENDOR: LAND AMERICA	P/N:	U.O.M. MM	SCALE: 1:12	SHEET 1 OF 2	SHEET SIZE: B	

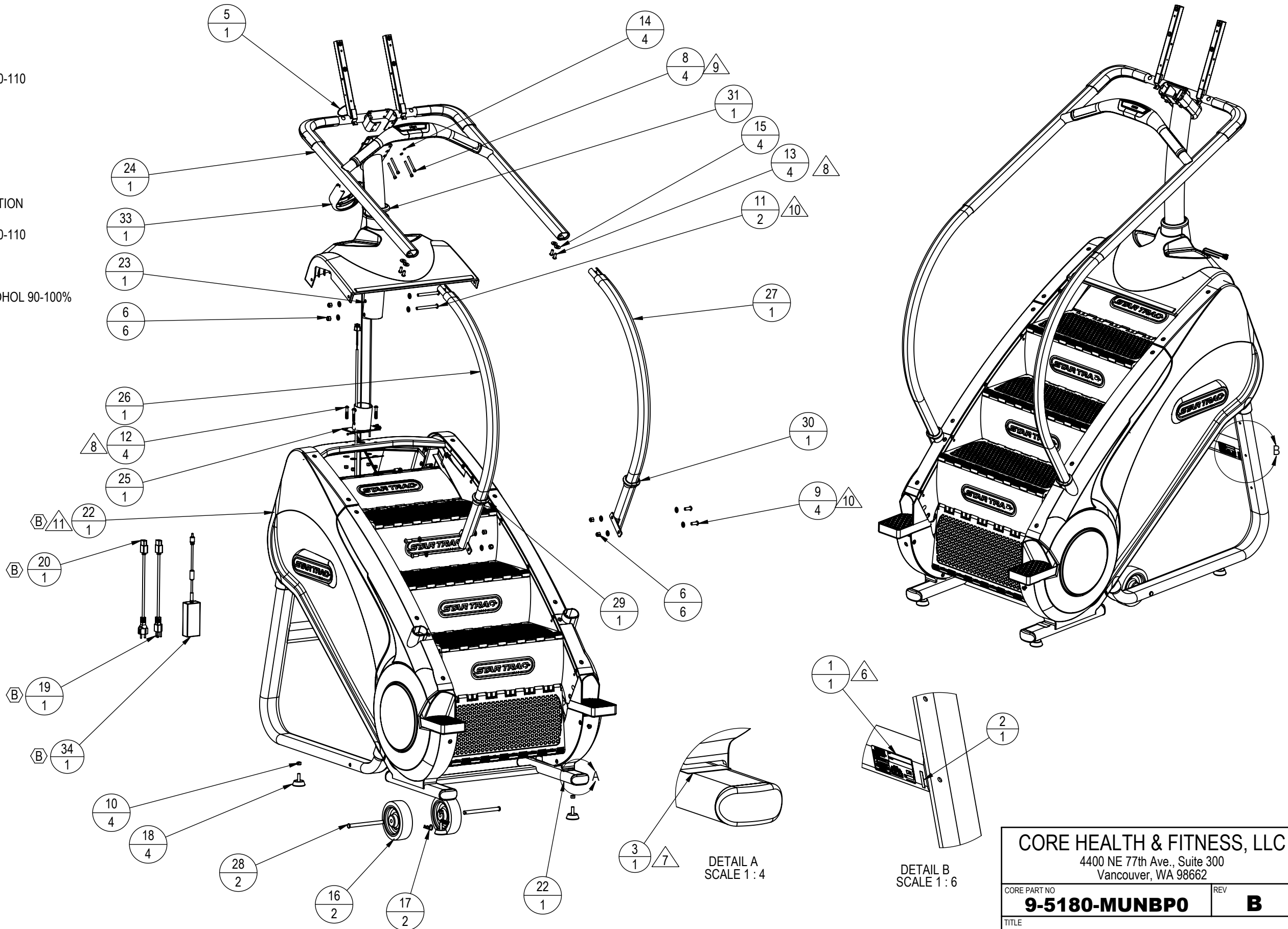
NOTES: cont.

6 PRIMARY SERIAL LABEL INFORMATION

- a. SKU: 9-5180-YRTBP0
- b. SERIAL NUMBER: PER DOC 622-200-110
- c. MFG DATE: MM/YYYY
- d. PHASE: N/A
- e. CYCLES: N/A
- f. WATTS: 66 W
- g. VOLTS/AMPS: 12Vdc/5.5A
- h. TYPE: N/A
- i. CERTIFICATIONS: CSA/CE/FCC

7. SECONDARY SERIAL LABEL INFORMATION

- a. SKU: 9-5180-YRTBP0
- b. SERIAL NUMBER: PER DOC 622-200-110
- 8. TORQUE TO 15-17 LB-FT/20-23 Nm
- 9. TORQUE TO 8-10 LB-FT/11-14 Nm
- 10. TORQUE TO 28-30 LB-FT/38-41 Nm
- 11. CLEAN PART WITH DENATURED ALCOHOL 90-100% PRIOR TO ADHEARING LOGO.



CORE HEALTH & FITNESS, LLC		
4400 NE 77th Ave., Suite 300 Vancouver, WA 98662		
CORE PART NO	REV	
9-5180-MUNBP0	B	
TITLE		
BASE, UNIV. E-STARMILL		
SCALE: 1:15	SHEET 2 OF 2	SHEET SIZE: B